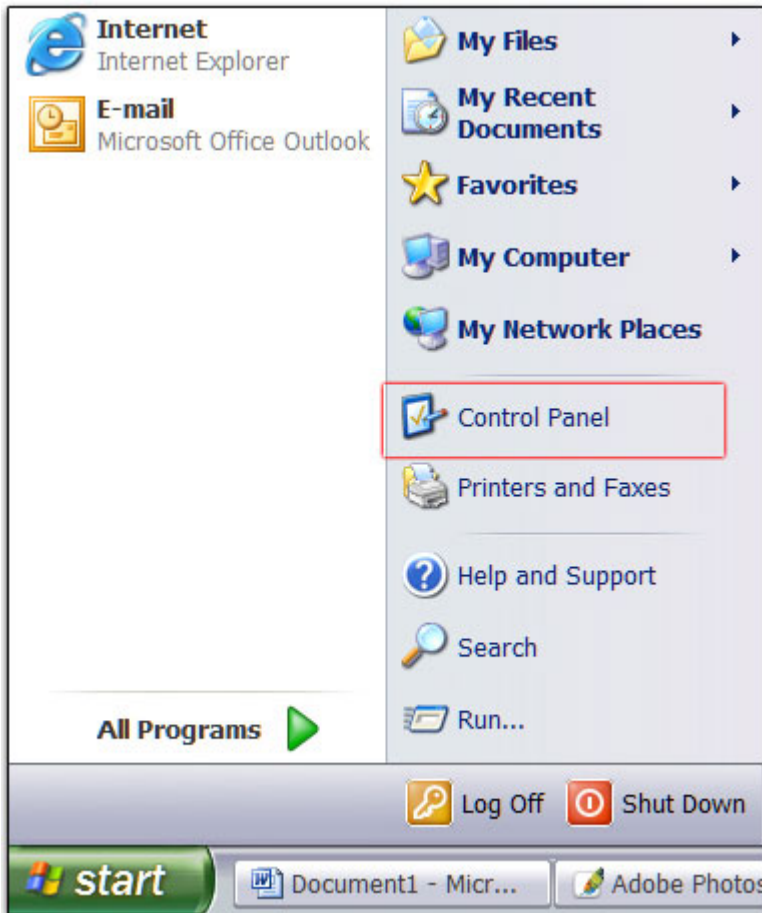


Wireless Configuration for Windows XP

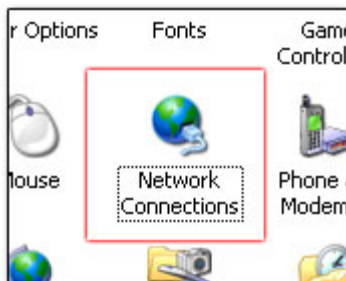
Install your card according to the manufacturer's installation instructions and verify that your drivers are working properly per the manufacturer's specifications.

Install an antivirus software program prior to setting up your wireless connection. Once your computer is connected to the network, it will be susceptible to viruses and worms. Be sure to first protect your computer before attempting to connect to any type of computer network.

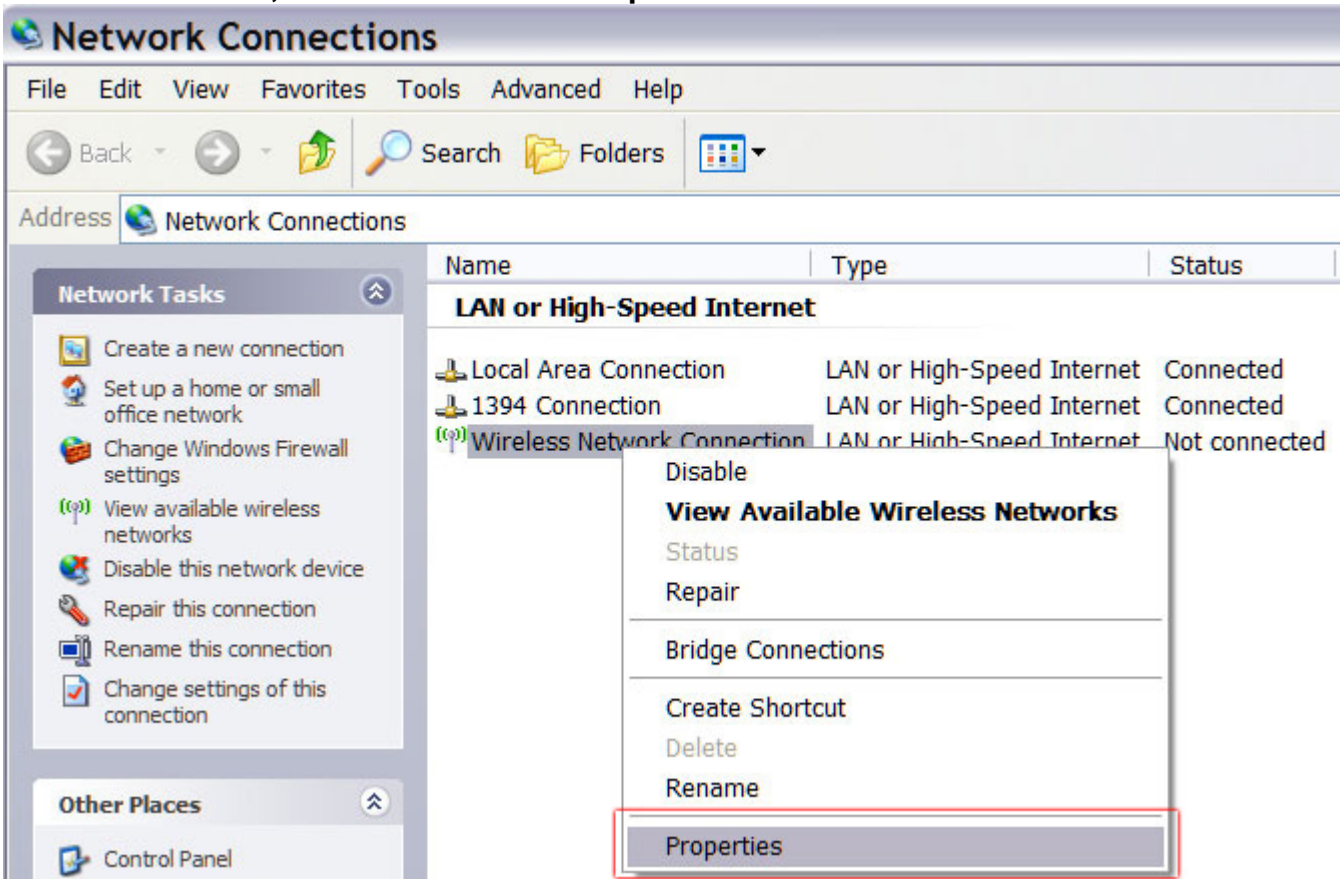
Step 1 - Click on your start-menu and then click on “Control Panel”



Step 2 – In the “Control Panel” window, Double-click “Network Connections”

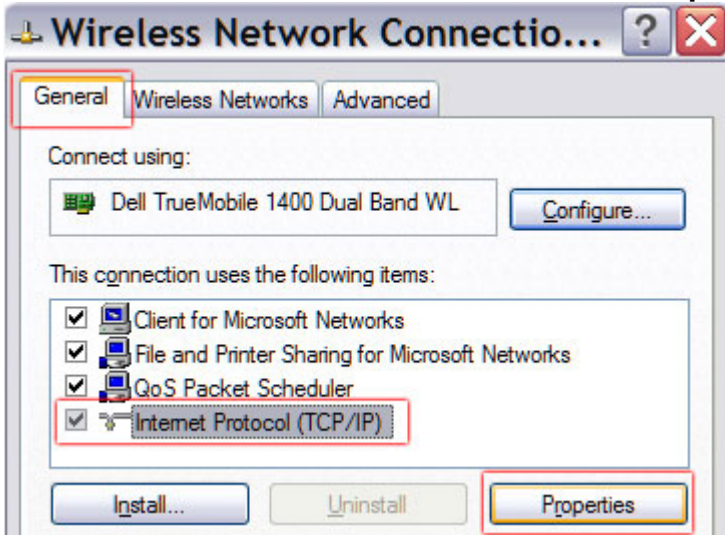


Step 3 - In the “Network Connections” folder, right-click on the “Wireless Network Connection” icon, and then click on “Properties.”

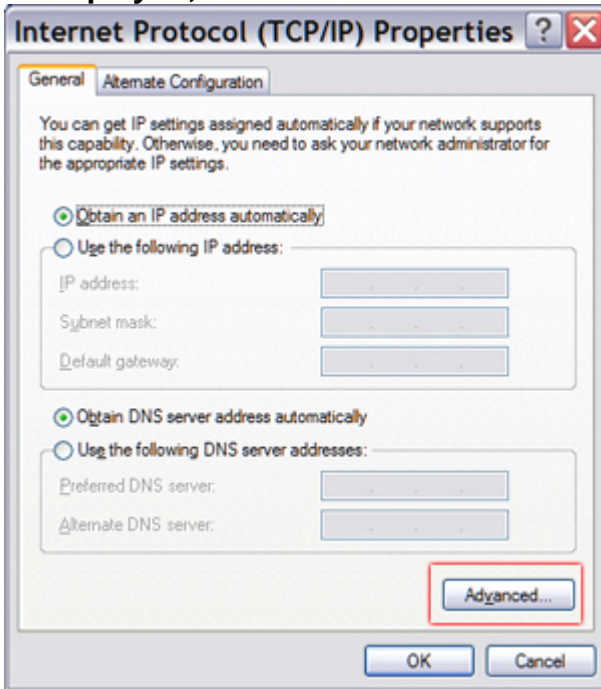


Note: If you do not see “Wireless Network Connection” you will need to reinstall your network card’s drivers.

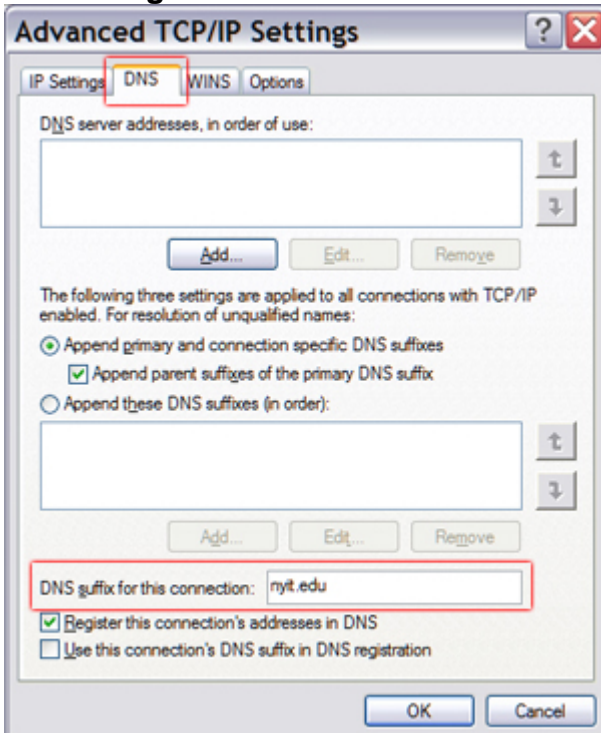
Step 4 - In the “Wireless Network Connections” window, Select the General Tab, click on “Internet Protocol” and then click on “Properties”



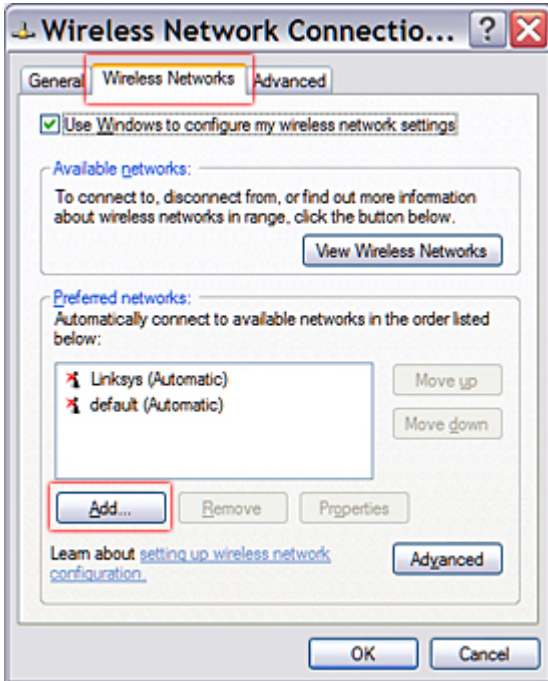
Step 5 - In the “Internet Protocol (TCP/IP) Properties” window, make sure the following is displayed, and then click on the “Advanced...” button in the bottom of the window.



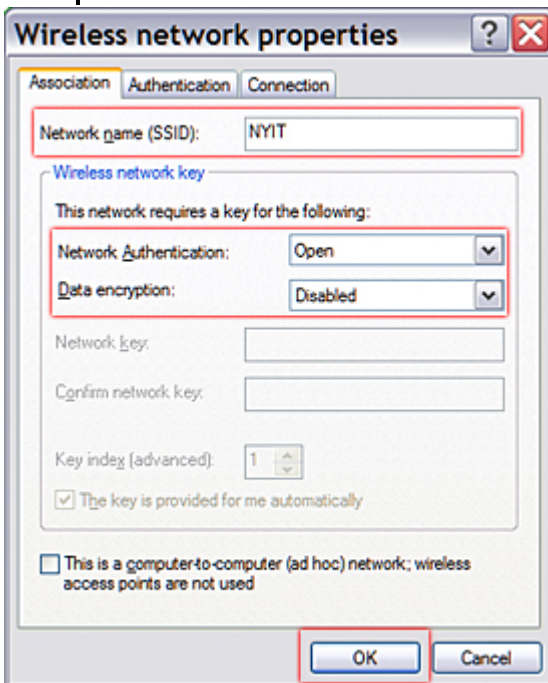
Step 6 - In the “Advanced TCP/IP Settings” window, select the DNS tab. Add “nyit.edu” to the “DNS suffix for this connection:” line. Click OK to close this window and OK again to close the “Internet Protocol (TCP/IP) Properties” window.



Step 7 - In the “Wireless Network Connections” window, click on “Wireless Networks” tab. Then click on the “Add...” button.



Step 8 - In the “Wireless network properties” window, add the “Network name:” *NYIT*

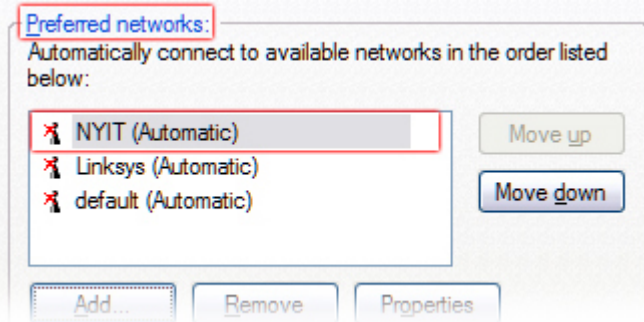


This is case-sensitive, so make sure you enter it in all capital letters.

Make sure the “Network Authentication:” is set to “Open” and the “Data encryption:” is set to “Disabled.”

Click OK to close this window.

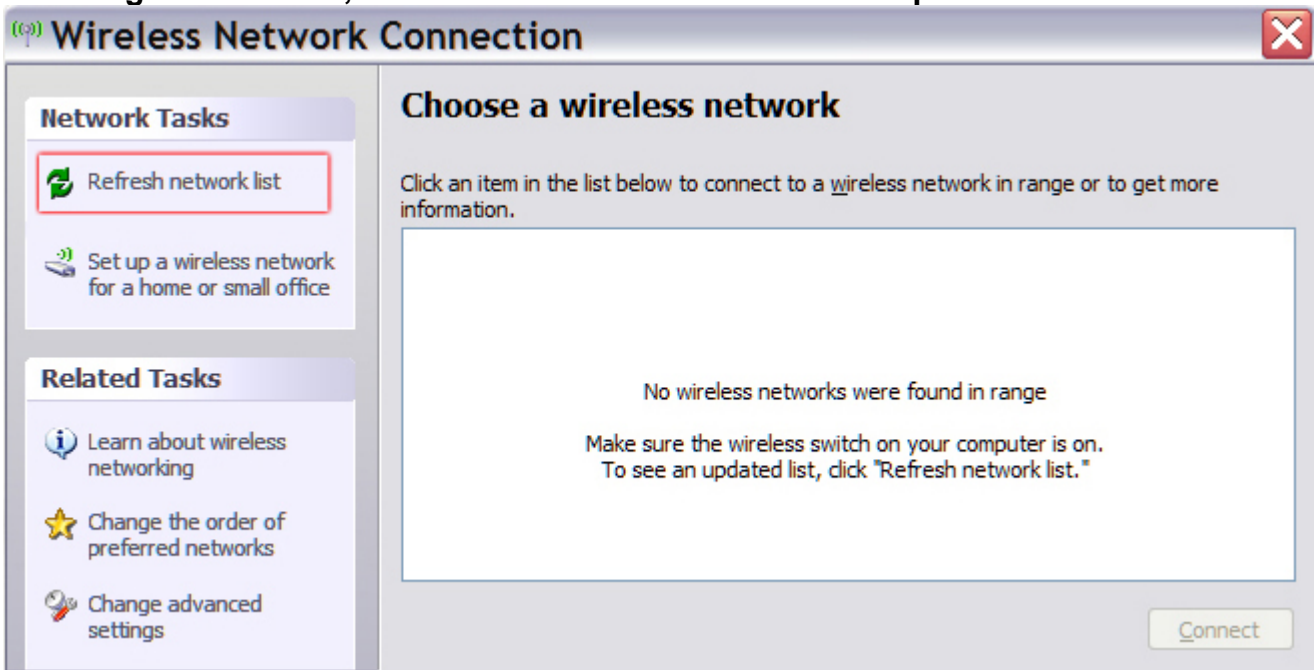
Step 9 - Back in the “Wireless Network Connections” window, you should now see “NYIT” listed under the “Preferred networks.”



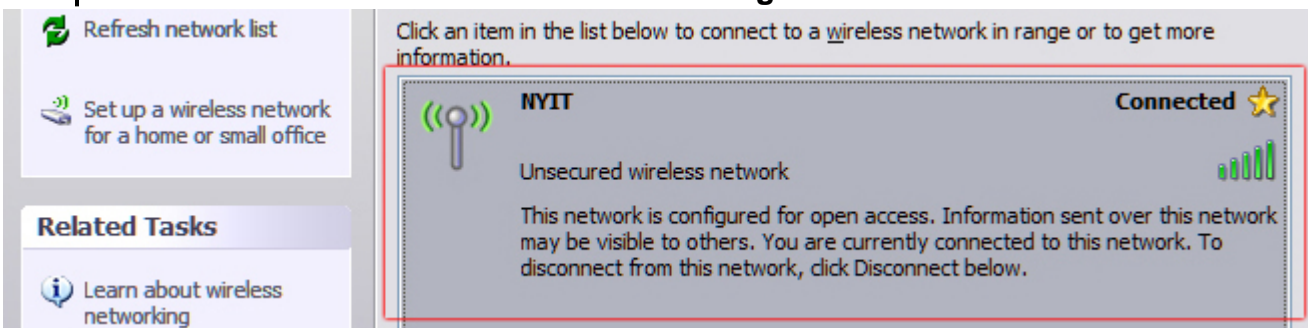
Make sure the “Use Windows to configure my wireless network settings” check box is selected. If this option is grayed out and you can not select this option, refer to your network card’s documentation to allow Windows to control this option.

Next, click on the “View Wireless Networks” button.

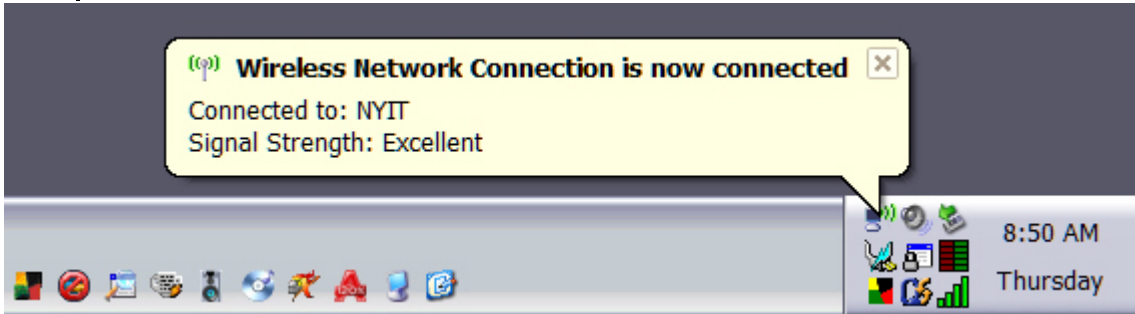
Step 10 A1 - If your copy of Windows XP has Service Pack 2 installed, you will see the following screen. Next, click on the “Refresh network list” option.



Step 10 A2 - You should now see the following screen.



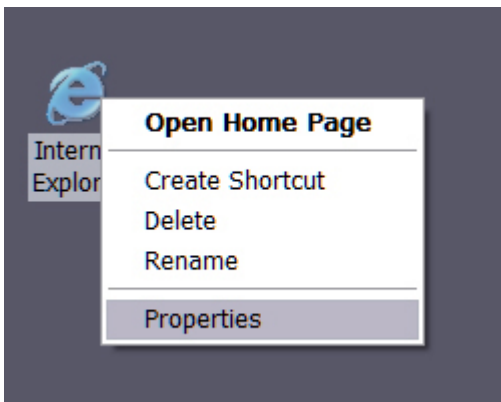
Step 10 B1 - You may also see the following in the lower right of your desktop:



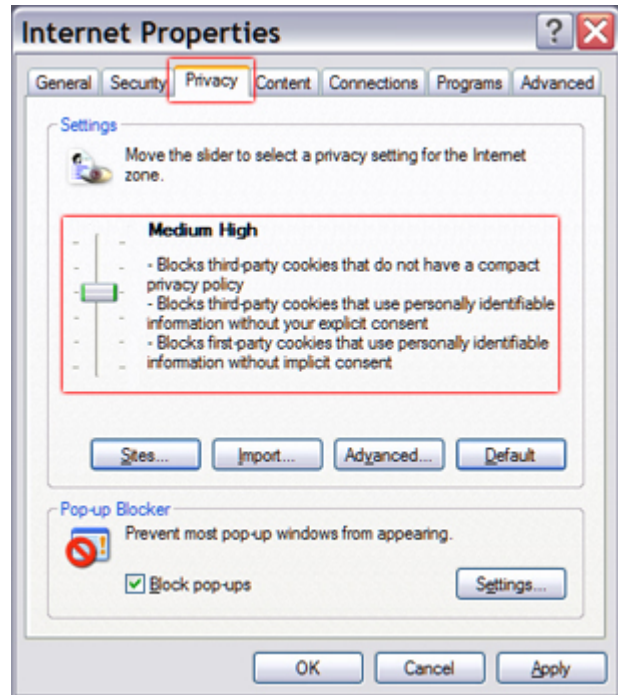
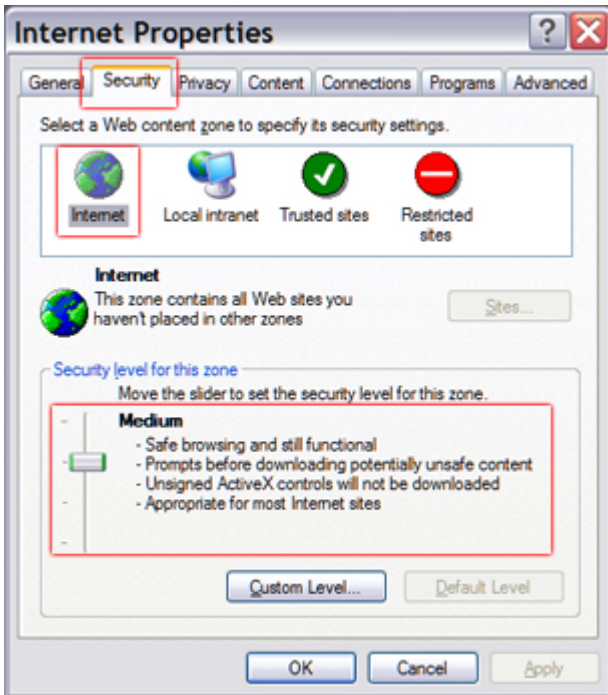
Step 10 B2 - If either of these two screens are not displayed, you may be out of range to the wireless access point. Make sure you are within range by checking with another computer that you know receives a signal. If this fails, go to the end of this documentation and see the "Troubleshooting" section.

Configure Internet Explorer to access the NYIT network:

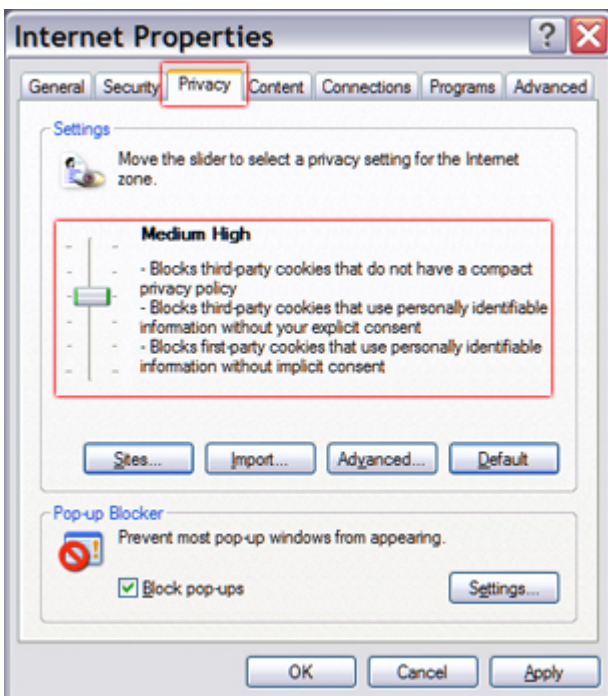
Step 11 – Open Internet Explorer Right-click on the "Internet Explorer" icon on your desktop and click on "Properties."



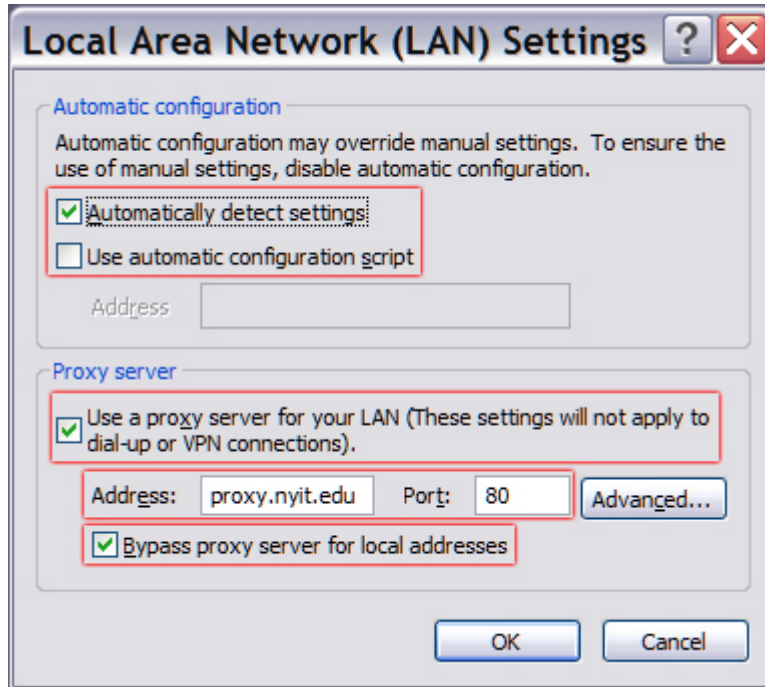
Step 12 - In the “Internet Properties” window under the “Security” and “Privacy” tabs, make sure you have the following settings entered:



Step 13 - In the “Internet Properties” window under the “Connections” tabs, make sure you have the following settings entered and click on the “LAN Settings...” button:



Steps 14 - In the “Local Properties Network (LAN)” window make sure make sure you have the following settings entered:



Press OK when you done.

Step 15 - Open Internet Explorer and enter a web page to visit. You should see the following “Security Alert” window Click “Yes” to proceed.





Step 17 - Your browser window will redirect itself to the following login page. If this is your first ever visit to this page using your computer, you will need to click on the “Install CA Certificate” button. You will only need to do this once on your computer. Follow the instructions on the screen to determine your “User Name” and “Password.”

Wireless Network Log In - Microsoft Internet Explorer

File Edit View Favorites Tools Help Address <https://216.73.0.248/login.pl?destination=h>

Back Forward Stop Refresh Home Search Favorites Links

Google

Registered Users
User Name

Password

Log In

Install CA Certificate
Help

October 07, 2004

powered by
bluesocket
www.bluesocket.com
© 1999 - 2002 Bluesocket Inc.

NYIT
NEW YORK INSTITUTE OF TECHNOLOGY

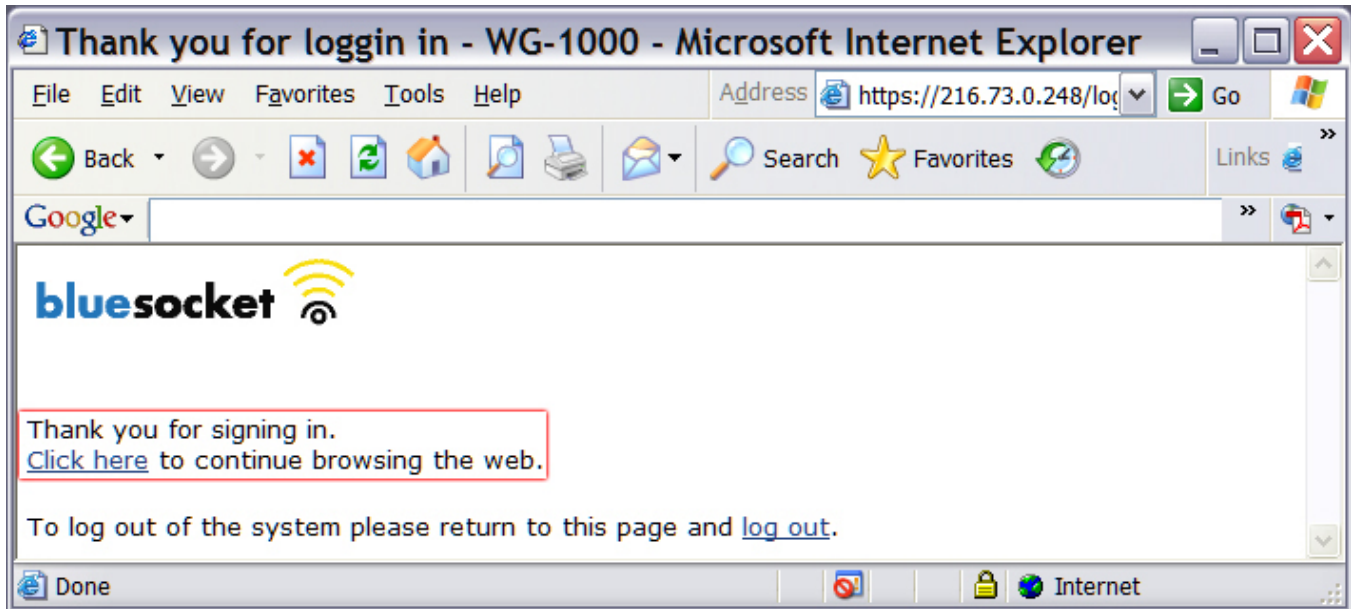
**Welcome to the Wireless Network at the
New York Institute of Technology**

A valid NYIT username and password are required to gain access.

Please enter your user name and password and click 'Log In'.

Your username and password is exactly the same as your NYIT MyMail account. (Do not append '@mymail.nyit.edu' to your username.) The MyMail and Wireless Network passwords are linked. Changing your MyMail password automatically changes your Wireless Network password.

Step 18 - After clicking on “Log In” you will see the following confirmation page. Click on “Click here” to continue browsing the web.



Step 19 - You should then be redirected to the NYIT homepage.